

INTERNATIONAL EXCHANGE PROGRAMMES

FACTSHEET 2016-2017
LILLE & NICE CAMPUSES



Make an impact

EDHEC BUSINESS SCHOOL IS PLEASED TO WELCOME EXCHANGE STUDENTS TO JOIN ONE OF OUR INTERNATIONAL PROGRAMMES, TAUGHT IN FRENCH OR IN ENGLISH, AT THE UNDERGRADUATE OR GRADUATE LEVEL.

Founded in 1906, EDHEC is a French Business School with two main campuses (Lille, Nice) and three executive campuses in Paris, London and Singapore. The school has an enrolment of over 6,200 full-time students and is offering a highly competitive business degree at the undergraduate, graduate and postgraduate levels. Ranked among the leading schools in Europe, EDHEC is one of the few management schools with the three accreditations AACSB, EQUIS and AMBA. EDHEC has a selective national entrance examination and recruiters appreciate our candidates' broad academic knowledge, competence in two foreign languages (in addition to French) and experience gained from practical internships carried out throughout the world. EDHEC is currently pursuing partnerships at the Graduate level with more than 130 prestigious institutions worldwide.

EDHEC Business School: Make an impact [click here](#)

Addresses

LILLE CAMPUS

24 avenue Gustave Delory, CS 50411,
59057 Roubaix Cedex 1, France

NICE CAMPUS

393 Promenade des Anglais, BP 3116,
06202 Nice Cedex 3, France

Locations

Lille Campus

EDHEC has chosen to build its new Lille International Campus on an exceptional site of 21 acres. Located in the heart of the Greater Lille metropolis, just minutes away from Lille's 2 train stations, the campus has been designated to meet the highest international standards, with respect for the environment, and provides students with superior pedagogical, sporting, cultural and accommodation facilities. Opened in September 2010, the new campus features ; one amphitheater of 750 seats, 20 amphitheatres of 100 seats, trading rooms, e-learning room, multi-media centre, student residences, 3000 m² of sports' facilities...

Campus video: [click here](#)



Nice Campus

EDHEC Business School's Nice Campus is located in an elegant and modern complex overlooking the Mediterranean Sea in the vicinity of the Nice Côte d'Azur International Airport. We have developed the campus via a 3,500 m² extension in 2010, and a new building in 2013. The upgraded campus offer an excellent environment for learning and research, with completely renewed lecture theatres, conference rooms, classrooms, student areas and include: 13 amphitheatres (one of 300 seats), lecture halls, Thomson Reuters trading room, e-learning room, library... Campus video: [click here](#)



CONTACT

NICE CAMPUS

LILLE CAMPUS

ERASMUS Code
F LILLE 15

Institution Website
www.edhec.edu

DEAN

OLIVIER OGER
olivier.oger@edhec.edu

DIRECTOR EDHEC International

Richard PERRIN
richard.perrin@edhec.edu

Manager of Study Abroad Office

Ms Caroline DARRIGUES
Tel : +33 4 93 18 32 46
caroline.darrigues@edhec.edu

Coordinator Study Abroad Office & Summer course	Ms Kinga BERTOTI Tel : +33 3 20 15 45 17 kinga.bertoti@edhec.edu	
ACADEMIC MATTERS for incoming students	Ms Caroline DARRIGUES Manager of Study Abroad Office Tel : +33 4 93 18 32 46 caroline.darrigues@edhec.edu	Ms Virginie LADEN & Ms Kinga BERTOTI Tel : +33 3 20 15 39 86 & Tel : +33 3 20 15 45 17 virginie.laden@edhec.edu kinga.bertoti@edhec.edu
PRACTICAL MATTERS for incoming students	Ms Emilie DECONINCK & Ms Yasmine NICOLLE & Ms Palaman GBAMPOK welcome.2nice@edhec.edu	Ms Céline MARSY Ms Camille CARPENTIER Tel: +33 3 20 15 45 41 edhecwelcome2lille@edhec.edu
Contact for EDHEC Outgoing students	Ms Stéphanie DANES Asia-Oceania & North America Tel : +33 3 20 15 45 41 stephanie.danes@edhec.edu Ms Virginie LADEN Europe, Latin America & South Africa Tel : +33 3 20 15 39 86 virginie.laden@edhec.edu	
Mailing Address	Promenade des Anglais BP 3116 06202 Nice Cedex 3, France	24 Avenue Gustave Delory CS 50411 59057 Roubaix Cedex 1, France



PROGRAMMES

Our Lille campus, based in northern France is home to our Business Management track and our Nice campus, based in the south of France is home to our Financial Economic track.

Due to possible timetable overlaps, it is not possible to combine courses from different levels or programmes. Students must select their courses in one program either in Nice or Lille. The following study programmes are available to your nominated students:

◆ Lille campus

Pre-Master level: Grande Ecole programme (taught in French) [click here](#)

Master level 1: Business Management track (**taught in English**) aimed at upper undergraduate students [click here](#)

Master level 2: MSc programmes (**all taught in English**) for students who have completed their Bachelor studies (180 ECTS)

- ◆ MSc in Marketing Management [click here](#)
- ◆ MSc in Entrepreneurship & Innovation Management [click here](#)
- ◆ MSc in Strategy Consulting and Digital Transformation [click here](#)
- ◆ LLM in Law and Tax Management [click here](#)
- ◆ MSc in Global Business (Fall semester only for simple exchange students) [click here](#)
- ◆ MSc in Creative Business (Lille session only) [click here](#)
- ◆ MSc in Management Studies [click here](#) (Recommended for students who have completed a Bachelor or Master in another discipline such as engineering, agro-science, pharmacy or chemistry...)

◆ Nice campus

Master level 1: Financial Economics track aimed at upper undergraduate students [click here](#) (**taught in English**)

Master level 2: MSc programmes (**all taught in English**) for students who have completed their Bachelor studies (180 ECTS)

- ◆ MSc in Finance [click here](#)
- ◆ MSc in Corporate Finance & Banking
(For students with a Bachelor degree in disciplines such as Economics or Business Management + a general background in Finance [click here](#))
- ◆ MSc in International Accounting & Finance [click here](#)
- ◆ MSc in Financial Markets [click here](#)
(Due to capacity constraints this programme is not open to simple exchange students. Only QTEM and double degree students are eligible)

* Financial Economics programs have limited spaces available. Therefore, acceptance to FE programs is not guaranteed.

◆ Summer school

The Summer Programme « Globalizing Europe » is open to graduate students and selected upper undergraduate students.

www.edhec-summer-school.com
Contact: kinga.bertoti@edhec.edu

◆ Fall semester 2016-2017

April 30	Online nomination deadline for partner institutions
May 13	Application deadline for students
May 31	Course registration deadline for students
End of August	Mandatory orientation session
End of August/early September	Beginning of classes
December 23	End of classes (including exams)

◆ Spring semester 2016-2017

October 5	Online nomination deadline for partner institutions
October 20 for non EU students November 4 for EU students	Application and course registration deadline for exchange students
January 3	Beginning of classes on Lille campus
January 9	Beginning of classes on Nice campus
April to May	End of classes (including exams)

◆ Expected arrival dates

We suggest arriving about two or three days prior to the start of the semester. Class attendance is compulsory. As a result, exchange students are required to arrive on time. Late arrival is not accepted.

◆ Nomination process

Partner institutions will be asked to register the nominated students on-line. Each institution will receive an e-mail from EDHEC with the necessary information (URL, username, password etc). A confirmation will be sent to each institution.

◆ Online application & course selection

<p>Simple Exchange students:</p> <p>Online application & course registration process</p>	<p>After the nomination by the home institution, exchange students must complete the online application and submit the following documents:</p> <ul style="list-style-type: none"> • 1 recent headshot photo (jpeg/pdf format) • Copy of grade transcripts + Bachelor degree (if applicable) • Copy of passport (or national identity card for European students) • Course registration form (signed by home university coordinator) <p>Neither TOEFL nor GMAT is required for non-degree seeking exchange students.</p>
<p>For Double Degree exchange programme only:</p> <p>In addition to the exchange application form to be sent to the EDHEC International Relations Office, students will have to meet the MSc admission requirements & application process:</p>	<p>Students who would like to join one of the MSc programmes as a degree-seeking student (only when a double degree agreement has been signed between EDHEC and their home institution) will have to meet the application requirements as defined on our website at: www.edhec.com</p> <ul style="list-style-type: none"> • Bachelor degree or higher • Academic excellence • Scholastic potential (GMAT) • Certified fluent English (TOEFL, TOEIC, IELTS). • Application package: essays, personal resume, recommendation letters. • Special academic requirements for the MSc programmes Nice campus <p>The nominated MSc students will be able to download and fill out the application form through the online application procedure. The complete application file must be uploaded by the May 31st deadline.</p> <p>The final decision regarding admission to the MSc programme is at the discretion of the MSc director and EDHEC.</p>

◆ French language courses

EDHEC offers French language courses to visiting students free of charge available on both Lille and Nice campuses.

- Regular term courses (Fall and Spring semester)
- Several levels will be offered (beginner, intermediate, advanced/Business French)

◆ Accommodation

The International Students Office will contact nominated students to inform them of available accommodation offers. These options are on a first come, first serve basis so it is best to reserve early as student housing is on high demand.

◆ NICE CAMPUS

Only off-campus accommodation available: room in student residence will be proposed to nominated students.

◆ LILLE CAMPUS

One on-campus option is proposed to nominated students in the EDHEC residence. There are 2 options in the residence: kots and private studios. We suggest other off-campus options when offers are made available to us.

◆ Visa & residence permit

Visa: Prior to your departure, please check on the [French Ministry of Foreign Affairs](#) whether you are required to apply for a visa or not.

If you do not have a European passport, you must have a visa to study in France (even if you have a residence permit from a European country).

Exchange students are requested to provide the International Students Office with all official mandatory documents on the day of the Welcome Session (Please refer to your e-mails). Students who do not provide these documents cannot be accepted.

◆ Health / medical coverage

Visiting students coming from EEC countries must submit their European medical card.

Citizens from Quebec must submit the SE-Q-106 form.

Other students:

Fall semester students:

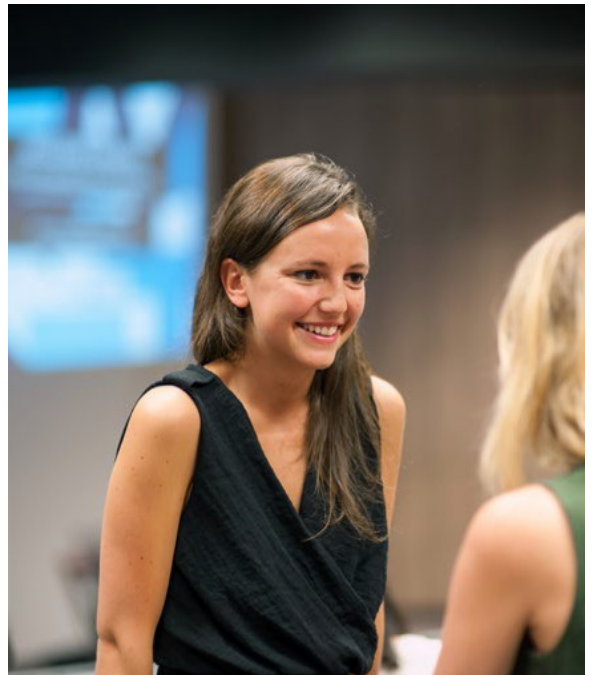
Students must take out a personal health insurance policy valid in France and for the period of their stay in France. Proof of their health insurance will be asked upon arrival.

Full academic year & Spring semester students:

Students must take out the French national health insurance scheme (sécurité sociale, approximately 215).

It is mandatory under French law (even if you have your own personal insurance in your country). However the French social security starts on the 1st of September so students are required to be personally insured upon their arrival until that date.

Visiting students older than 28, from different nationalities are required to take out an international medical plan no matter the duration of their stay. Proof of their health insurance will be asked upon arrival.



◆ Frequently asked questions

Q: What kind of orientation, if any, do you provide?

A: The International Students Office offers an Orientation session which includes social activities and informational meetings. (Residence permit, medical coverage/care in France, academic info, etc.).

Q: How many exchange students attend your institution each year?

A: about 350 (for both campuses) but that number is increasing every year.

Q: What teaching methods are used?

A: Tutorials, lectures, workshops, seminars.

Q: Course List and Course Description

A: Course lists are available through the links mentioned on page 4 of this factsheet.

Q: What is the regular workload?

A: 30 ECTS is the regular (and maximum) workload per semester for EDHEC students but we have no rules for visiting students concerning the number of courses or credits that must be taken. The home university decides what the requirements are for their students (unless it is a Double Degree seeking student in which case they take all courses in their study programme, like EDHEC students).

Q: What is the grading system used?

A: Scale from 0 to 20, 10 = pass

Q: Do you offer make-up exams?

A: Yes, Make-up exams are offered. Schedules will be given to the students during the exchange. Make-up exams cannot be taken outside of the EDHEC Lille or Nice Campus. No make-up exams will be organized for French classes.

Q: When do students receive their transcripts?

A: Official transcripts are sent to home university by email. Students have access to their grades and official transcripts via their web Aurion account.

For Fall semester: in February/March

For Spring semester: in June/July

Q: What are the facilities/services available to students?

A: Computers are available on-campus, but are in high demand

- Wireless internet access is available on-campus
- Each exchange student is given an email account upon arrival
- Photocopy machines and printers available
- Sports facility open to all students
- On campus cafeteria in Nice; 3 on campus restauration options in Lille
- Library facilities

Q: Do exchange students have access to our Career Centre?

A: Exchange students will have the opportunity to meet a Career Adviser and participate in many corporate events (recruiting days, company presentations, etc.)

Please note that EDHEC cannot sign any placement contract between exchange students and French companies. Students must make arrangements with their home university. Visa procedure during the internship period should be checked with the French Embassy in the home country.

Since the first few months in a new country and a new city can be particularly difficult for international students, the International Relations Office offers a number of services in order to ease this transition, such as a welcome session and orientation program for new exchange students, French courses, help in acquiring a residence permit, and assistance in finding accommodation.